



Books & Bytes

University of Washington Health Sciences Libraries and Information Center

Volume 10, Number 4

Summer 1998

Decision-Making Tools for Clinical Care

Debra Ketchell
Deputy Director

Bringing clinical decision making tools to the point of care is one of the goals of the Health Sciences Libraries, working in collaboration with the Academic Medical Centers, Medical Centers Information Systems, and the IAIMS program. Clinicians can now link directly to the HealthLinks Care Provider Toolkit, a web-based gateway on your desktop to the clinical digital library. Links to selected tools such as drug reference are imbedded within the MINDScape view of the patient record. We also continue to expand access to WWAMI faculty and students connecting to HealthLinks through a third party internet service provider.

The Care Provider Toolkit provides web-based access to drug references, immunization information, MEDLINE, patient education materials, evidence-based medicine, practice guidelines, and a growing collection of online clinical journals. You can order articles from the library using the PubMed order button or our own web form for delivery via fax or as a PDF document.

A link to this Toolkit has just been added as a menu option on the IRIS terminals. For quick access from your PC or Mac, you can make the Care Provider Toolkit your home page, add it to your browser Bookmarks or Favorites, or create a desktop shortcut. The library offers "The 5 Minute Library" introductory demonstrations to the Toolkit at UWMC or HMC division or department meetings, and in-depth training is available from your library liaison.

(Continued p.3)

Care Provider Toolkit: Web-Based Resources for the Clinician

http://healthlinks.washington.edu/toolkits/care_provider.html

The Care Provider Toolkit on HealthLinks can be used as a clinical homepage for patient care. You can reach the toolkit from the navigation bar on the left side of most HealthLinks pages.

The toolkit is divided into seven subject areas, arranged with the most-requested resources at the top. The information icon (an 'i' in a blue circle) leads you to more information about a particular resource. Click on the 'lock' icon for information about restricted use.

MEDLINE, Journal Articles, and Drug References

MEDLINE is listed first, followed by links to full-text electronic journals and forms to order articles online from the library. Drug Reference resources are listed next, including FDRx (UW's *Federated Drug Reference*), Micromedex, and a list of the FDA's newly approved drug therapies. FDRx incorporates the *UW Formulary* and *USPDI Volume I - Drug Information for the Health Care*

Professional, the premier source for clinical drug information. You can access Micromedex from within FDRx as well. Micromedex includes drug and poison information, as well as the *PDR* and *Martindale The Extra Pharmacopeia* (a good source for non-U.S. drug information) and care instructions.

Patient Information

Patient information is another heavily requested clinical resource. *EthnoMed*, a database created by the Health Sciences Libraries and Harborview Medical Center's Community House Calls Program, is

(Continued p.2)



LIBRARY HOURS

Summer Quarter

June 21 - August 21, 1998

HEALTH SCIENCES LIBRARY

Monday-Thursday	7 am - 10 pm
Friday	7 am - 7 pm
Saturday	10 am - 6 pm
Sunday	noon - 10 pm

HSLIC INFORMATION DESK

Monday-Friday	8 am - 5 pm
Saturday-Sunday	1 pm - 5 pm*

*In-person service only. No phone service available

SOCIAL WORK LIBRARY

Monday-Friday	8 am - 5 pm
Saturday-Sunday	noon - 5 pm

K.K. SHERWOOD LIBRARY

Monday-Friday	8 am - 5 pm
Saturday-Sunday	CLOSED

HOLIDAY and INTERIM HOURS

Please check the library hours Web page at <http://healthlinks.washington.edu/hsl/hours.html> for Holiday/Interim hours.

Telephone Numbers

area code 206

Administration	543-5531
Circulation/Photocopy	543-3390
Collection Development	543-3439
Director's Office	543-5531
Document Services/ILL	543-3441
Harborview Med Ctr Library	731-3360
Health Information for You	543-7478
Hours and Location	543-5530
Information Desk	543-3394
Microlab Desk	543-1784
Regional Medical Library	543-8262
Research Funding Service	685-8036
Social Work Library	685-2180

Produced by HSLIC
for Health Sciences Center personnel.

Sherrilynne Fuller, Director
Debra Ketchell, Deputy Director
Carolyn Weaver, Editor
Pat Mink, Production Manager

Contributors to this issue:
Sherry Dodson, Ellen Howard, Debra
Ketchell, Terry Ann Jankowski,
Martha Means, Leilani St. Anna

Health Sciences Libraries
and Information Center
University of Washington, Box 357155
Seattle, WA 98195-7155
(206) 543-5531
hsl@u.washington.edu
<http://healthlinks.washington.edu/hsl/>

Care Provider Toolkit (continued)

designed to make information about culture, language, health, illness and community resources directly accessible to health care providers who are seeing patients from different refugee groups. *Health Reference Center* includes both full-text patient education materials and references to patient and consumer health information. This section also includes links to materials from the American Academy of Family Practice and the American Medical Association, as well as a link to *Healthfinder*, a gateway to consumer health information from the U.S. government.

Evidence-Based Medicine

An area of growing interest to clinicians is Evidence-Based Medicine and Practice Guidelines. The toolkit provides links to the UW Physicians Guidelines, PubMed's MEDLINE evidence-filtered searches for clinical queries, *Best Evidence* containing value-added abstracts to high quality clinical studies reported in journal articles, and the Cochrane Library. The Cochrane Library contains complete systematic reviews on hundred of topics as well as citations to research articles.

Disease Information and Calculators

In the Disease Information section you can find a DXplain, a differential diagnosis tool from Massachusetts General Hospital. There are links to *Scientific American Medicine Online*, the *Merck Manual*, and information on common or chronic conditions such as HIV/AIDS, travel medicine, and diabetes. Other reference tools include clinical calculators, test information from UW's Department of Laboratory Medicine, ICD-9 description or code number search tools, and *Stedman's Medical Dictionary*.

Several resources in the toolkit, particularly textbooks and evidence-based medicine resources, are currently available only through our

CD-ROM network. We are negotiating web-based access to these products. We have recently moved to the new *Scientific American Medicine Online* via the web, and anticipate providing *Harrison's Online* and the full Cochrane Library by Fall 1998. Some of these new products require a password, which you can obtain by emailing hsl@u.washington.edu. Include your name, department and email address in your request for a password.

The Care Provider Toolkit is continually evolving. Please send your comments and suggestions for resources to hsl@u.washington.edu or contact your library liaison.

Aagaard: UW Email for Care Providers



Aagaard is a special cluster of computers dedicated to providing a secure and reliable email system for authorized UW Academic Medical Centers clinical staff. It supports the standard applications found on other University Uniform Access computers (e.g., Homer) such as PINE email, UWIN and remote Dial-IP access.

All clinical faculty, residents and fellows should set up their email accounts on Aagaard. This can be done from any computer that is directly connected to the UW computing network. From an email station in the libraries, select **Aagaard**. When prompted for a username on Aagaard, type **new** and the system will guide you through the account setup process. Aagaard support is provided by Medical Center Information Systems at 206-543-7012. For more information see:

http://home.mcis.washington.edu/mcis/iris/Clinical_Email.html

Decision-Making Tools (continued)

Email hsl@u.washington.edu to request a "HealthLinks Fast Start" handout or a fast start introduction.

Finally, what lies ahead? We will be working with you to refine the Care Provider Toolkit to make it faster and easier to use. We will be moving our CD-ROM titles such as *Scientific American Medicine* to web access as they become available, and will be piloting new content (e.g., MD Consult). A grant submitted to the National Library of Medicine seeks funding to integrate multiple sources in finding answers to primary care questions. We encourage interested clinicians to work with us in developing the Care Provider Care toolkit to meet your information needs. Volunteers should contact Leilani St. Anna at lstanna@u.washington.edu.

Internet Connectivity Kit

The UW Internet Connectivity Kit (UWICK) is a software collection that provides UW students, staff and faculty access to networked communications and information services (i.e., lets you use the UW as your internet service provider) from home or office. You can purchase it at the main University Book Store or its branches at the HUB, South Campus Center, and UW Bothell and Tacoma campuses. The cost is \$17; UW ID required.

For additional information as well as the rules for using UW computers, networks and software, visit the UW Computer and Networking web site at http://www.washington.edu/tech_home/docs/uwick.html

The UWICK contains the following on one CD, along with installation instructions:

Windows 95, Windows NT, Windows 3.x

- Microsoft Internet Explorer (IE)
- Microsoft Outlook Express (OE)
- EWAN Telnet Program
- CRT Terminal Emulator
- WS-FTP
- WinWillow
- Dr Solomon's Anti-Virus Toolkit
- Adobe Acrobat Reader
- Netscape Navigator

Macintosh computers

(System 7.1 or higher, 7.5 recommended)

- Microsoft Internet Explorer (IE)
- Microsoft Outlook Express (OE)
- NCSA Telnet
- Fetch
- Dr Solomon's Anti-Virus Toolkit
- Dr Solomon's Virex
- Adobe Acrobat Reader
- Netscape Navigator

PubMed: Web Access to MEDLINE

<http://www.ncbi.nlm.nih.gov/PubMed/>

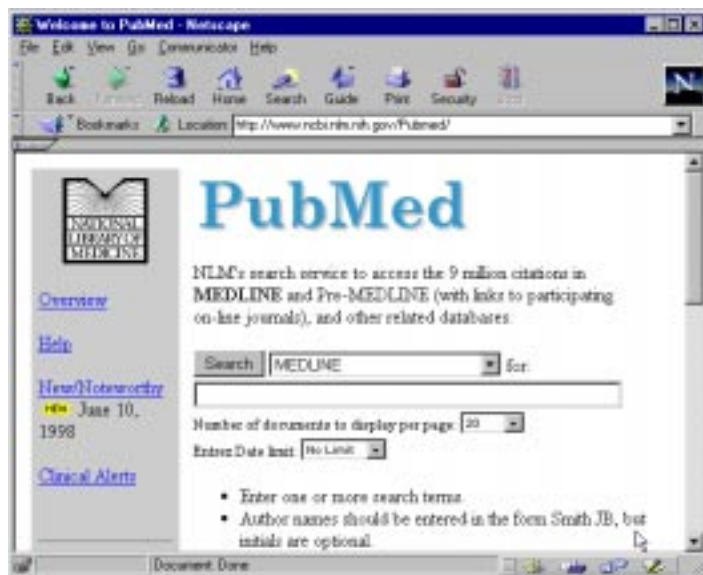
PubMed, the National Library of Medicine's (NLM) premier Web interface, provides access to MEDLINE (1966 to date) and other selected NLM databases using any Internet service provider. Unique features of PubMed include PREMEDLINE records for citations that have not yet been added to MEDLINE, as well as selected links to online journals. Although the content is currently limited to MEDLINE, PREMEDLINE, and genetics databases, other NLM databases will be added.

Basic or advanced search modes are available so that either novice or expert searchers can run successful searches. A unique PubMed feature is the ability to find related articles. When you have found 'the perfect article', follow the **Related Articles** link to locate similar articles in the database. You can save citations with abstracts in both PC and Mac formats, and results can be downloaded using

bibliographic citation software such as *EndNote* or *Reference Manager*.

Clinical Queries can be used to produce specialized searches in the areas of therapy, diagnosis, etiology and prognosis, with emphasis on either sensitivity or specificity. Results are restricted using search filters to articles that report research conducted with specific methodologies.

Other PubMed features include a MeSH (*Medical Subject Headings*) Browser to identify indexing terms; a journal browser to translate title abbreviations to the full journal name (or vice versa); and an easy-to-use Citation Matcher to identify journal articles when you have an



incomplete citation.

Contact your library liaison for more information on PubMed or to arrange for training sessions for yourself or your department by emailing hsl@u.washington.edu

Electronic Drug Information Resources

The Care Provider Toolkit provides links to a variety of electronic drug information resources, which fall into two general categories: full-text information useful for writing or dispensing prescriptions (*Micromedex*, *FDRx* and *RxList*), and bibliographic databases such as MEDLINE, *Drugs & Pharmacology* (EMBASE), and *International Pharmaceutical Abstracts* (IPA).

MICROMEDEX

Micromedex Intranet Knowledge Bases is a collection of drug information resources (see sidebar) providing extensive information about drugs and diseases – dosages, contraindications, adverse affects, etc. Searching is done through a menu. Access is restricted to UW IP numbers.

FDRx

FDRx (Federated Drug References) is the electronic version of the UW and Harborview Medical Centers' formulary with links to other electronic resources. Descriptive information about each drug comes from *USP DI Volume I Drug Information for the Health Care Professional*. A "sounds like" search is performed on the drug name entered into the search

box, which means that accurate spelling is not a requirement for successful searching in this database.

MEDLINE

The first-choice database for locating journal articles and abstracts from 1966 to date on medical topics, emphasizing clinical on practice in the U.S. The Web-based PubMed interface, in contrast with UW's local system accessible via Willow and the HealthLinks Databases page, offers cost-free access to MEDLINE from any Internet service provider.

The following databases are among the additional drug resources available by selecting **Pharmacy** from the "Pick a Clinical Specialty" box on the Care Provider Toolkit. You can also reach *Drugs & Pharmacology* and *IPA* from the Databases page on HealthLinks.

RxList

This web site, created by a pharmacist, is searchable both alphabetically and by imprint code. Information about the top 200 prescribed drugs can readily be found here.

Drugs & Pharmacology (EMBASE)

Provides coverage of many journals not found in MEDLINE, especially non-U.S. literature. Especially useful for European and investigational literature. Searching is menu-based.

International Pharmaceutical Abstracts (IPA)

Covers journals intended for pharmacists as well as some meeting literature. Especially good for marketing information, e.g. which antidepressant has the greatest market share. Since updating is much slower than either EMBASE or MEDLINE, rely on it primarily for background information or for less-current references.

Electronic Access for Offsite Users



Many commercially licensed resources on HealthLinks are restricted to computers connected to the UW campus network. On the HealthLinks Care Provider Toolkit these resources are indicated by a lock graphic. UW faculty, staff and students accessing HealthLinks from a non-UW internet service provider are thus "locked out" while we await a campus solution to web authentication.

To help address this problem, an "Alternative View" of the Care Provider Toolkit is available. Access the alternative view by clicking the link that appears at the top of the regular Care Provider page. Most of the links to restricted products have been removed. Products available to non UW computers via a password (e.g., Cochrane Library, OVID, SAM Online) are listed. UW faculty, staff and students may obtain a password to use these products by emailing hsl@u.washington.edu. Please indicate your UW affiliation and department in your message.

MICROMEDEX Contents

CareNotes™ System (advice for patients)

DRUGDEX® System

Drug Evaluation Monographs (package inserts and published abstracts)

Drug Consults (questions and answers from drug information centers)

Product Index

EMERGINDEX® (acute care disease & trauma treatment protocols)

IDENTIDEX® System (tablet & capsule identification)

Martindale's Extra Pharmacopoeia (for foreign drug identification, management of side effects and identification of "natural products")

MSDS (material safety data sheets)

PDR or Physician's Desk Reference® (package insert information)

PoisIndex® System (identification & toxicologic management of ingredients from commercial, pharmaceutical & biological products)

ReproRisk® System (teratogenicity resources)

REPROTEXT® Reproductive Hazard Reference

REPROTOX® Reproduction Hazard Information

Shepard's Catalog of Teratogenic Agents

TERIS Teratogenic Information System

TOMES® (Toxicology, Occupational Medicine and Environmental Series)

HAZARDTEXT® (transport and handling of hazardous substances)

MEDITEXT® (medical management of hazardous substances exposure)

Online Journals and Article Ordering in Clinical Settings

How common are mental status changes in renal cell carcinoma patients? How sensitive is ultrasound for diagnosing appendicitis? Is thrombolytic therapy contraindicated in acute infarction patients that have received CPR? These and a myriad of other questions may constitute a typical night's admissions for housestaff or fellows.

Health care providers have long had access to MEDLINE and other databases in UW clinical settings to help identify citations that may answer these questions; but access to the text of the articles was limited by library hours or the content of departmental collections. Now the Health Sciences Libraries supports a growing number of online electronic journals and reference tools that can be accessed from the ER, hospital floors, the clinic, or from home. The Care Provider Toolkit provides easy access to all of the full-text electronic resources supported by the Health Sciences Libraries, as well as to a request form for ordering articles that are not available online.

The Ovid Full-Text Journals collection currently provides access to 45 titles such as *American Journal of Cardiology*, *Circulation*, *Chest*, *American Journal of Obstetrics and Gynecology*, *Journal of Bone and Joint Surgery*, and *Neurosurgery*. A number of journals such as *Lancet* and *American Family Physician* are included in the *Health Reference Center* database. The library also offers the Springer-LINK collection published by the Springer companies and the IDEAL collection from Academic Press. Although each collection has a different search interface, all offer help pages or tutorials to assist the new user. The "ejournals" list also includes titles available at no charge on the web (e.g., *MMWR*), as well as links to the publishers of titles such as *Annals of Internal Medicine* that offer partial full-text of recent issues.

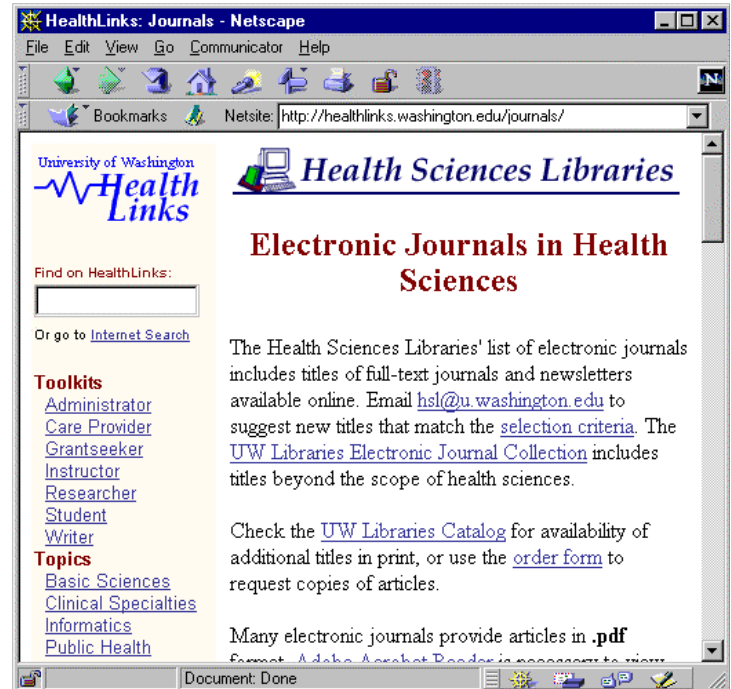
Although the library offers many core clinical titles online, the majority of our journal collection remains in

paper format. To simplify access, you can use the link on the Care Provider Toolkit to request an article. Or you may send email requests to

hsl@u.washington.edu.

Requests for items from our collection are usually filled within 24-48 hours. For urgent clinical care, note "RUSH: Clinical Emergency" on the request form. Article delivery charged to a UW budget number costs \$4 per article. Articles requested by UW faculty or staff are delivered by fax to WWAMI

clinical sites at no additional charge. You can also request that an article be delivered as a PDF document.



Recent Gifts

Acknowledgement and appreciation are extended to the following individuals and organizations that have recently made contributions to the Health Sciences Libraries:

Mr. Andy Aldrich; Mr. Richard Bogg; Prof. Norman E. Breslow; Dr. Joseph Chu; Prof. Jon Conte; Dr. James Detter; Dr. John P. Geyman; Ms. Mary R. Gillmore; Dr. J. David Godwin; Dr. Christine M. Hobbs; Dr. Hal H. Hunt; Ms. Rachael Johnson; Dr. Seymour J. Klebanoff; Dr. Robert H. Knopp; Dr. Manfred Labande; Dr. J.C. Lara; Ms. Laura Larsson; Dr. Gerald S. Letterie; Mr. Henry Maier; Ms. Maryann Matteo; Mr. Chung Mea Ha; Dr. D. Catherine Miller; Mrs. Thomas Moore; Dr. Arno G. Motulsky; Mr. Karl Nagel; Dr. Alvin H. Novack; Mr. Dan Olson; Dean Gilbert S. Omenn; Dr. James A. Parker; Ms. Annie Peterman; Mr. & Mrs. Harry and Larae Phillips; Dr. David J. Pierson; Dr. Kenneth L. Pim; Ms. Marian Pruzan; Dr. Kazimer Skubi; Ms. Mary Ellen Smith; Dr. Charles E. Stirling; Mr. Tory Taylor; Dr. Noel S. Weiss; Dr. Jim Whorton; Dr. Richard Willson; the following UW departments: Anesthesiology; Clinical Education Library; Health Services; Laboratory Medicine; Maternal & Child Health Training; Nursing Education; Pathology; Primate Information Center; School of Nursing; UW Medical Fraternity; and the following institutions: American Academy of Family Physicians; Anesthesiology & Critical Care Department, Children's Hospital and Medical Center; Group Health Central; Research Signpost Publication; and Southwest Pediatrics

Funding Resources for Clinical Researchers

<http://healthlinks.washington.edu/toolkits/grantseeker.html>

Your first stop for information about clinical research funding is the HealthLinks Grantseeker Toolkit maintained by the Research Funding Service (RFS). Some of the key resources include:

National Institutes of Health (NIH)

The NIH offers three new career development awards designed to attract clinicians to clinical research and to improve the quality of clinical research training.

Funding Opportunities Databases

Available on a trial basis until Sept. 1, 1998, the IRIS (Illinois Research Information Service) database contains information about over 7,500 federal and non-federal funding opportunities in the sciences, social sciences, arts, and humanities. Other databases of funding opportunities for UW researchers include the Community of Science Funding Opportunities Database and SPIN (Sponsored Projects Information Network).

The Research Funding Service, a joint project of the Library and the School of Medicine, offers individual consultation services, a monthly bulletin of funding opportunities, files on funding sources, and a monthly discussion series, Grant\$ For Lunch. The RFS office, located in

HSLIC room T-311, is open 1-5pm, Monday through Friday. For more information, call (206) 685-8036 or send email to rfs@u.washington.edu.

After Hours Access for Clinical Emergencies

UW and Harborview Medical Centers clinical staff requiring access to library materials to handle patient care emergencies after regular library hours must call the appropriate security office to gain access to the libraries.

Health Sciences Library: call the University Police at 543-9331 and ask them to radio the Health Sciences Building security guard. The guard will meet you at a designated location and admit you to the library. You will be required to show valid UW or HMC identification. If you are unable to quickly locate the information needed, the guard will contact a librarian to assist you. Materials may be removed from the library only with the permission of the librarian on call.

K.K. Sherwood Library at Harborview: call the Harborview operator and ask a security officer to meet you at the library entrance. You will be required to show valid UW or HMC identification.

Serial Title Changes

February 1998 - June 1998

New titles

Immune receptor supplement, 1996—
Rapid communications in mass spectrometry, v.12(1998)—

Title changes:

Advances in mind-body medicine, v.14(1998)— . Continues: Advances
Clinical chemistry and laboratory medicine, v.36(1998)—. Continues: European journal of clinical chemistry and clinical biochemistry
Hospital outlook, v.1(1998)—. Continues: Health systems review
Hospital statistics, Reference Book Stacks: WX 16 A512h. Continues: American Hospital Association hospital statistics
Journal of clinical monitoring and computing, v.14(1998)—. Formed by merger of: Journal of clinical monitoring, and International journal of clinical monitoring and computing
Journal of healthcare management, v.43(1998)—. Continues: Hospital & health services administration
Mosby's genrx, Reference Book Stacks: QV 772 P585. Continues: Physicians genrx
Sexually transmitted infections, v.74(1998)—. Continues: Genitourinary medicine
Skin pharmacology and applied skin physiology, v.11(1998)—. Continues: Skin pharmacology.

Health Sciences Libraries and Information Center

University of Washington, Box 357155

Seattle, WA 98195-7155

What's Inside

Decision-Making Tools	1
Care Provider Toolkit	1
Aggaard	2
Internet Connectivity Kit	3
PubMed	3
Electronic Drug Information	4
Access for Offsite Users	4
Online Journals	5
Recent Gifts	5